



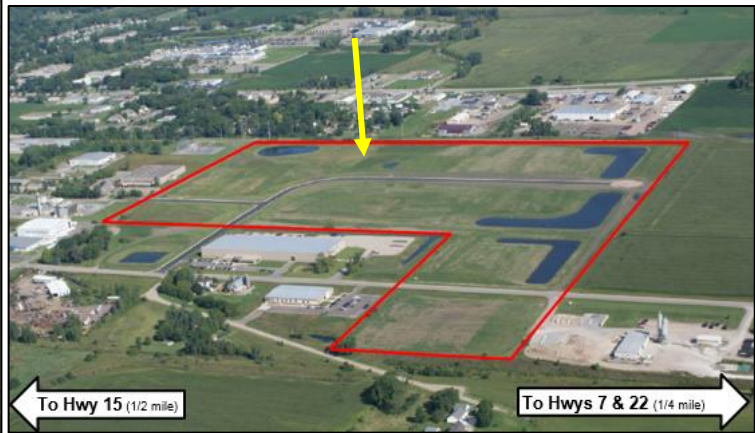
Miles Seppelt, EDA Director

(320) 234-4223

[MSEPPELT@CI.HUTCHINSON.MN.US](mailto:MSEPPELT@CI.HUTCHINSON.MN.US)

[WWW.HUTCHINSONEDA.COM](http://WWW.HUTCHINSONEDA.COM)

**Lot 2, Block 2**  
**Energy Park, 2<sup>nd</sup> Addition**  
 1141 Benjamin Avenue SE, Hutchinson, MN 55350



<b>Size</b>	✓ 8.57 acres (373,296 sf)
<b>Price</b>	<ul style="list-style-type: none"> <li>✓ \$1 psf (\$373,296)</li> <li>✓ <b>\$1 for the lot</b>, for qualifying companies</li> <li>✓ No assessments</li> </ul>
<b>Zoning</b>	✓ I-1, Light Industrial
<b>Utility Services</b>	<ul style="list-style-type: none"> <li>✓ 6" water, 8" sanitary sewer</li> <li>✓ Power supplied by Hutchinson Utilities</li> <li>✓ No additional storm-water ponding needed</li> </ul>
<b>Notes</b>	<ul style="list-style-type: none"> <li>✓ DEED certified <b>shovel-ready</b></li> <li>✓ Can be sub-divided</li> <li>✓ 9-ton roads</li> </ul>

