



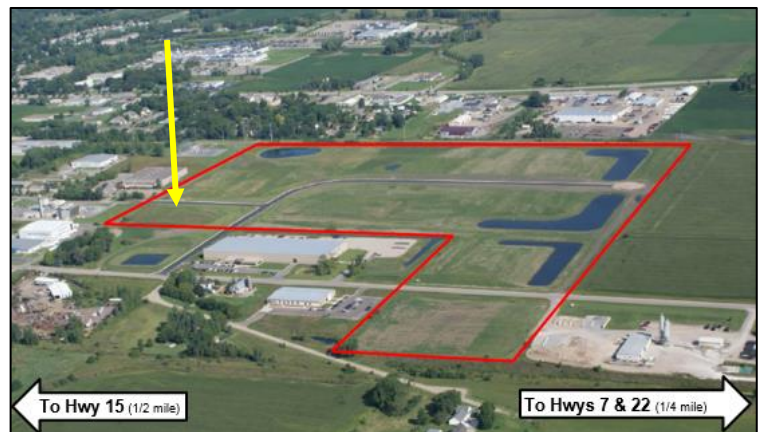
Miles Seppelt, EDA Director


(320) 234-4223

[MSEPPELT@CI.HUTCHINSON.MN.US](mailto:MSEPPELT@CI.HUTCHINSON.MN.US)

[WWW.HUTCHINSONEDA.COM](http://WWW.HUTCHINSONEDA.COM)

**Lot 1, Block 1**  
**Energy Park, 2<sup>nd</sup> Addition**  
 250 Hackbarth Street SE, Hutchinson, MN 55350



<b>Size</b>	<ul style="list-style-type: none"> <li>✓ 3.09 acres (134,410 sf)</li> </ul>
<b>Price</b>	<ul style="list-style-type: none"> <li>✓ \$.69 psf (\$92,700)</li> <li>✓ <b>\$1 for the lot</b>, for qualifying companies</li> <li>✓ No assessments</li> </ul>
<b>Zoning</b>	<ul style="list-style-type: none"> <li>✓ I-1, Light Industrial</li> </ul>
<b>Utility Services</b>	<ul style="list-style-type: none"> <li>✓ 6" water, 8" sanitary sewer</li> <li>✓ Power supplied by Hutchinson Utilities</li> <li>✓ No additional storm-water ponding needed</li> </ul> 
<b>Notes</b>	<ul style="list-style-type: none"> <li>✓ DEED certified <b>shovel-ready</b></li> <li>✓ Lot is crossed diagonally by a natural gas pipeline</li> <li>✓ 9-ton roads</li> </ul>